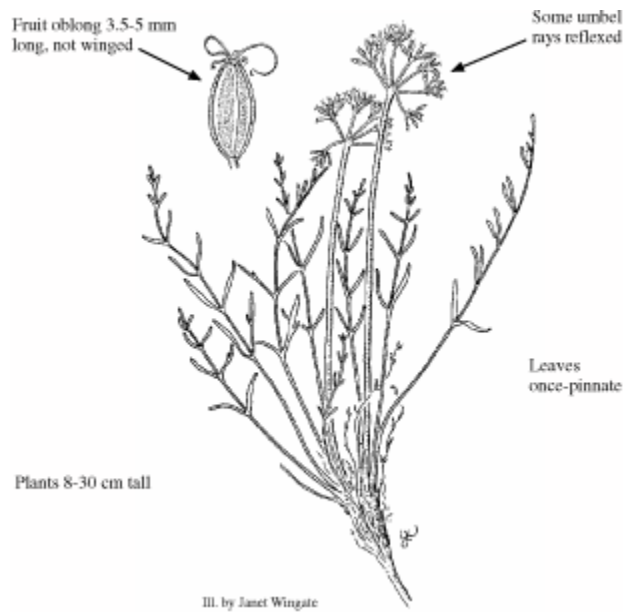


Aletes lithophilus

ROCK-LOVING NEOPARRYA



Photo Copyright © 1999 by B. Jennings



Apiaceae (Parsley Family)

Illustration Copyright © 1999

Synonym: *Neoparrya lithophila*

Look Alikes: *A. acaulis* lateral leaf lobes are broad and incised with flaring tips. *A. acaulis* and *A. anisatus* do not have reflexed umbel rays which give the inflorescence of *A. lithophilus* a ball-shaped appearance. *A. anisatus* has a strong anise odor.

Flowering/Fruiting Period: May-early July/late June-September.

Habitat: Igneous outcrops or sedimentary rock derived from extrusive volcanics. North facing cliffs and ledges, within pinyon-juniper woodlands. Elev. 7000-10,000 ft.

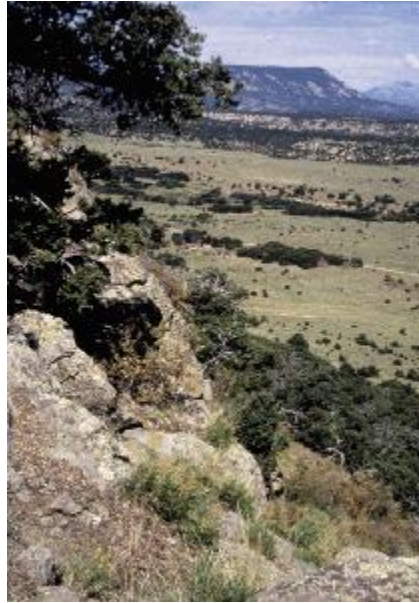
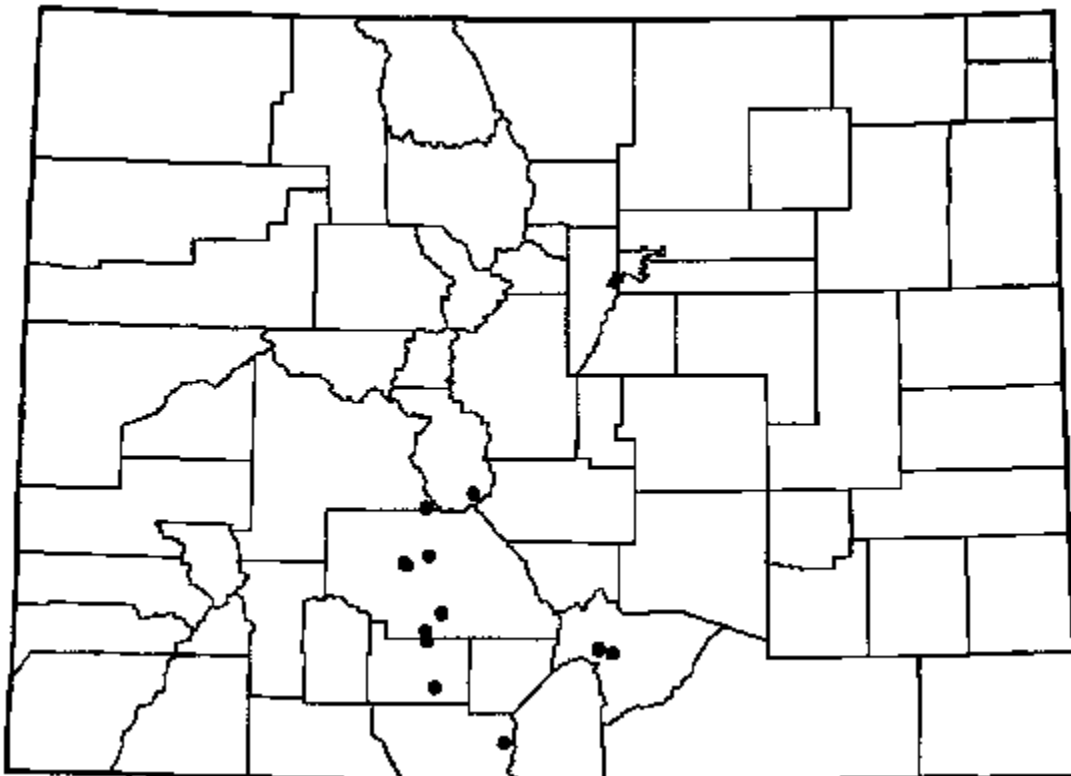


Photo Copyright © 1999 by T. Schulz

Distribution: Endemic to Colorado (Chaffee, Conejos, Fremont, Huerfano, Rio Grande and Saguache Cos.).



References: O’Kane 1988; Peterson et al. 1981a.