

*Oreocarya mensana*

**CARBON CRYPTANTH**

---

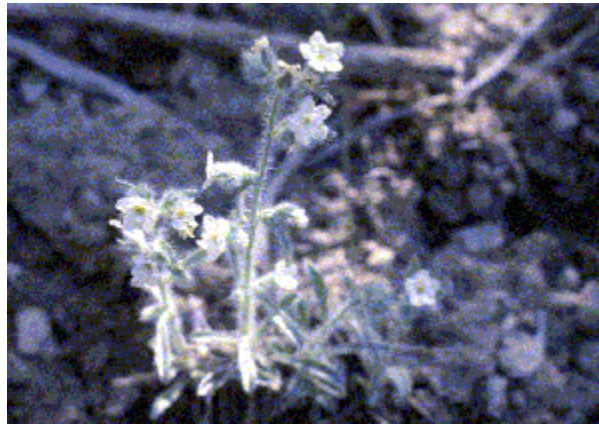


Photo Copyright © 1999 by W. Kelley

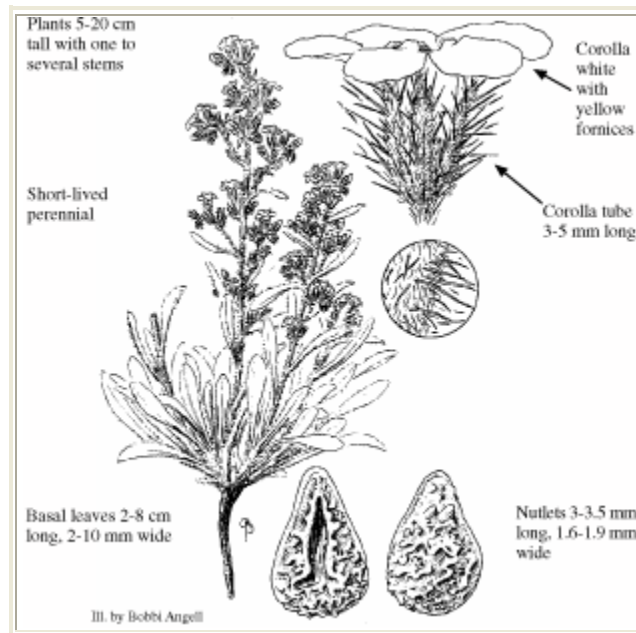


Illustration Copyright © 1999

**Boraginaceae (Borage Family)**

---

**Synonym:** *Cryptantha mensana*

**Look Alikes:** *O. flavoculata* has a longer corolla and a less open inflorescence.

**Flowering/Fruiting Period:** April-May/May-June.

**Habitat:** Dry, open places; usually on clay soils; typically in pinyon-juniper,

down to desert shrub and up to Douglas-fir communities. Elev. 4500-9000 ft.

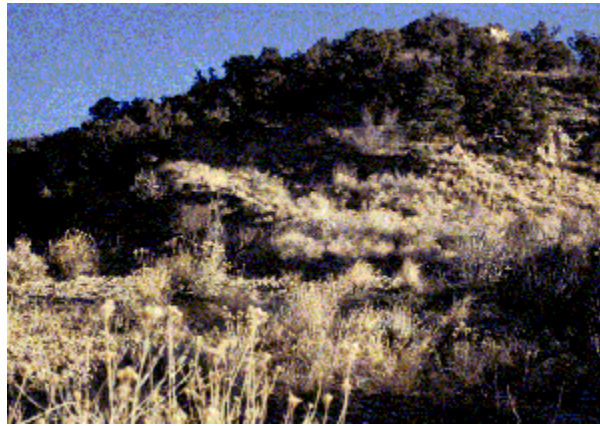
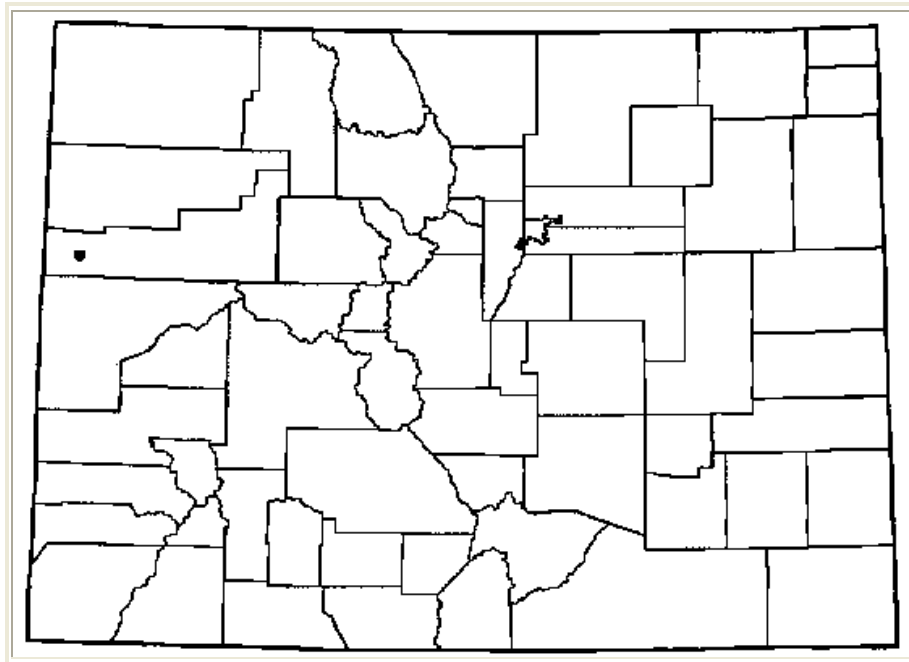


Photo Copyright © 1999 by W. Kelley

**Distribution:** Utah and Colorado (Garfield Co.).



**References:** Cronquist *et al.* 1984; Higgins 1971.