

Ipomopsis aggregata ssp. weberi

RABBIT EARS GILIA



Photo Copyright © 1999 by S. Kettler

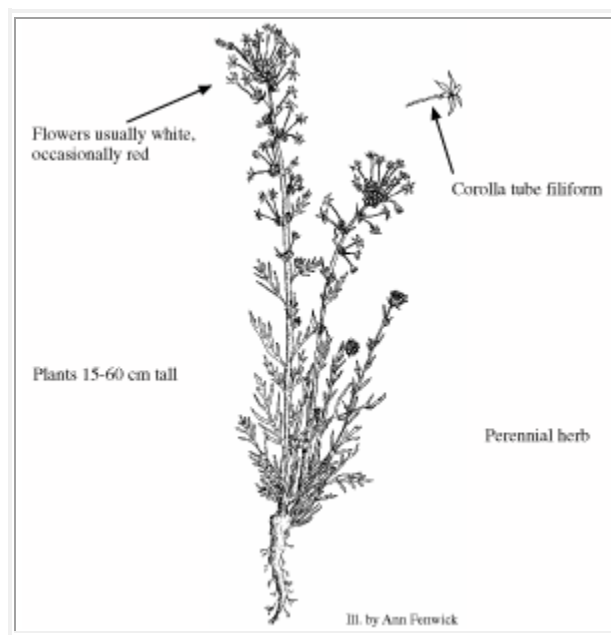


Illustration Copyright © 1999

Polemoniaceae (Phlox Family)

Look Alikes: *I. aggregata ssp. attenuata* has a more open corolla tube (1 mm wide at base flaring to 2-3 mm at orifice), and pink to red flowers. These species intergrade

where their ranges overlap.

Flowering/Fruiting Period: Flowers in July.

Habitat: Openings in coniferous forests. Elev. 8000-9600 ft.

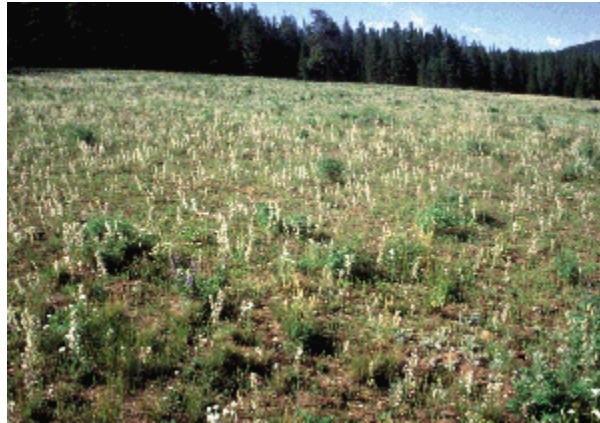
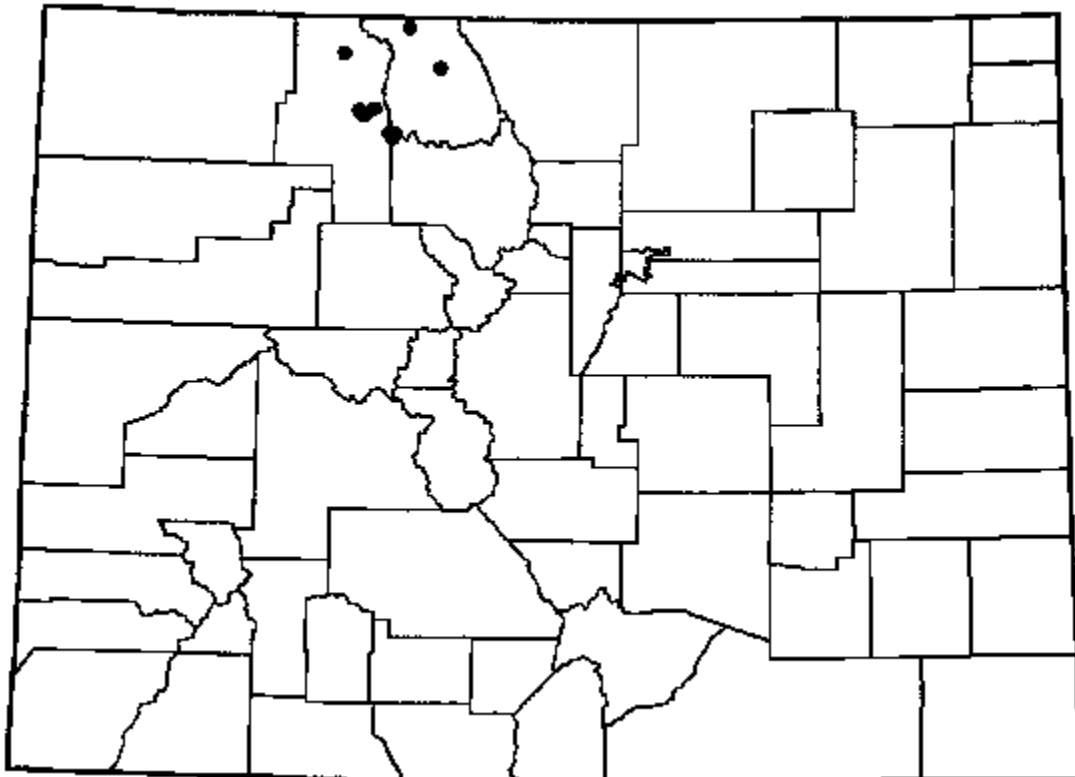


Photo Copyright © 1999 by S. Kettler

Distribution: N Idaho, SE Wyoming and N Colorado (Rabbit Ears Pass; Grand, Jackson and Routt Cos.).



References: Grant and Wilken 1986.